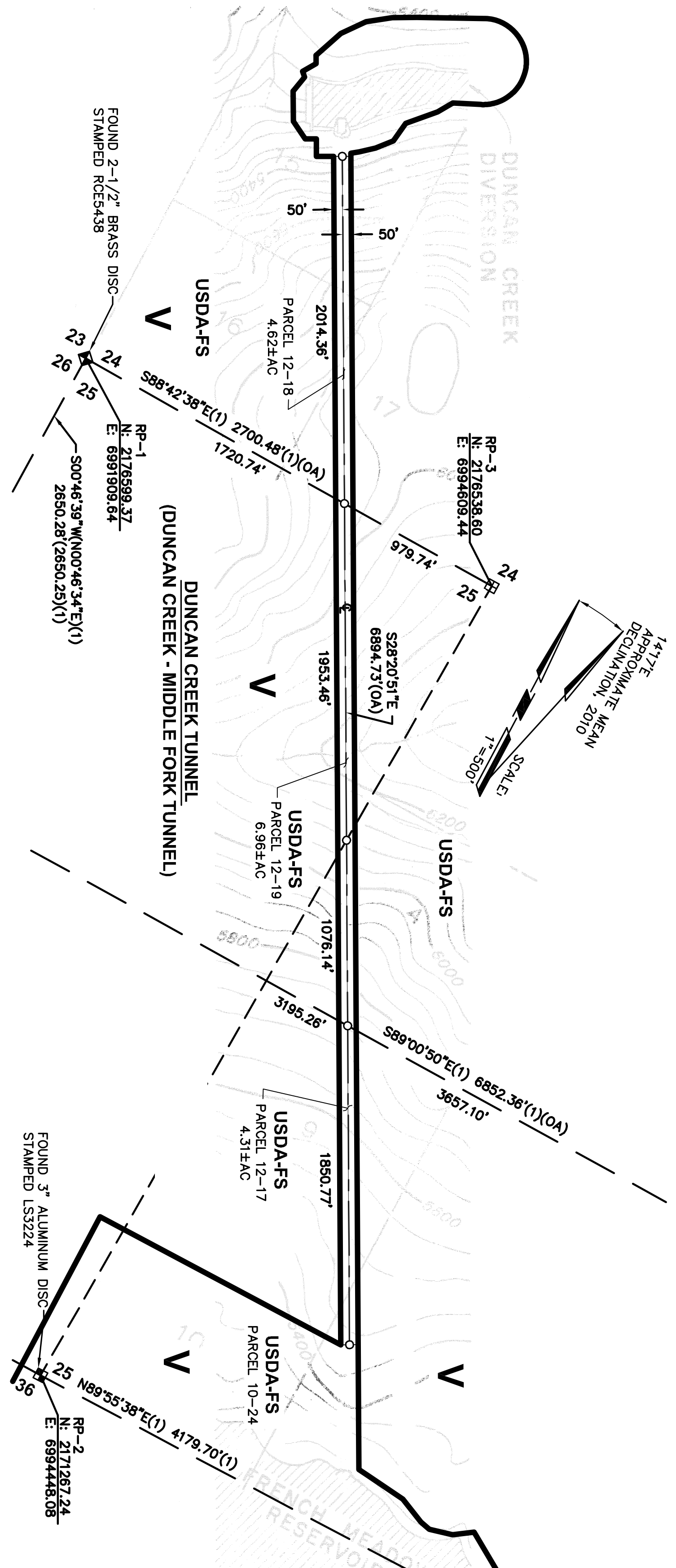
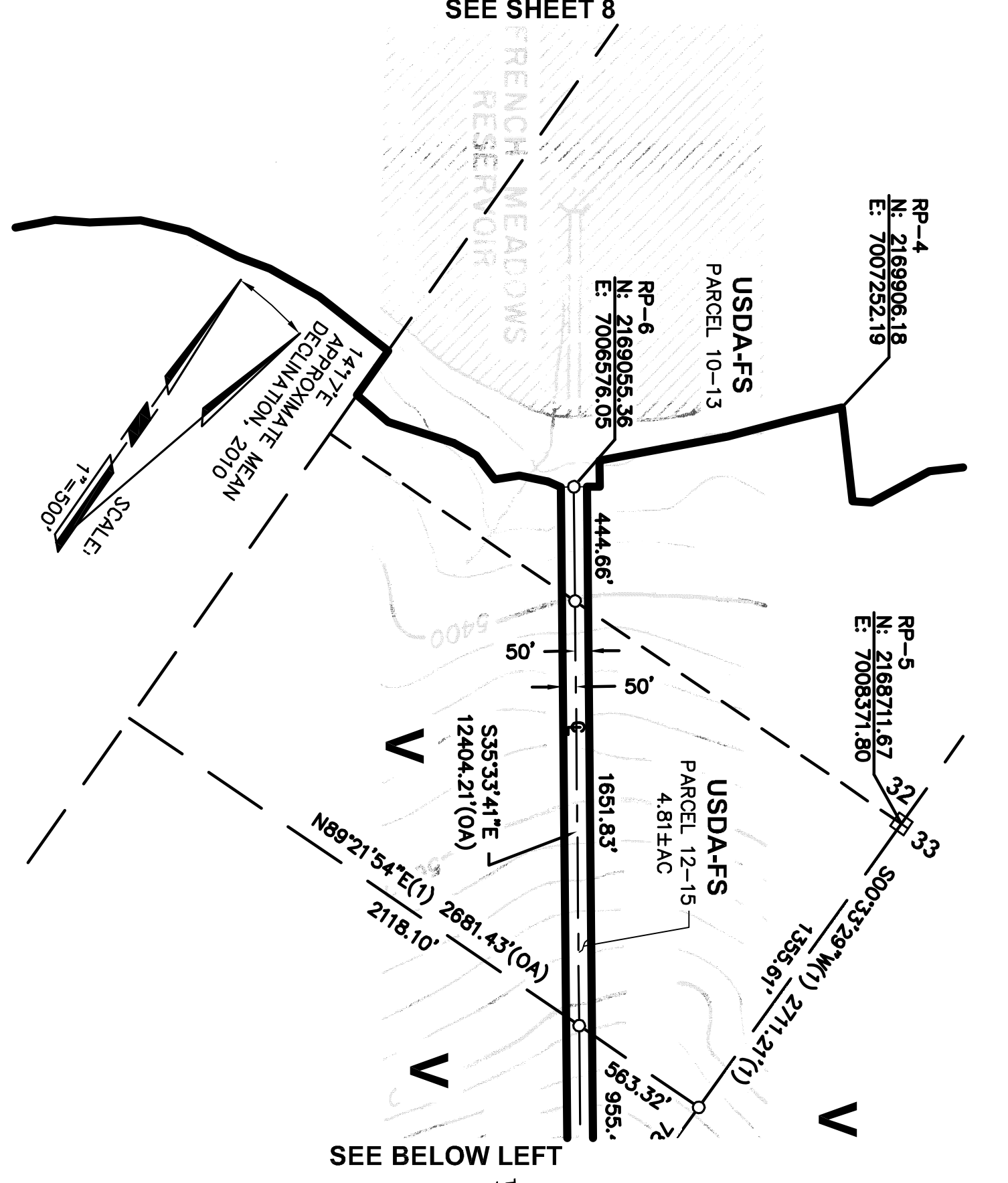


SEE SHEET 1

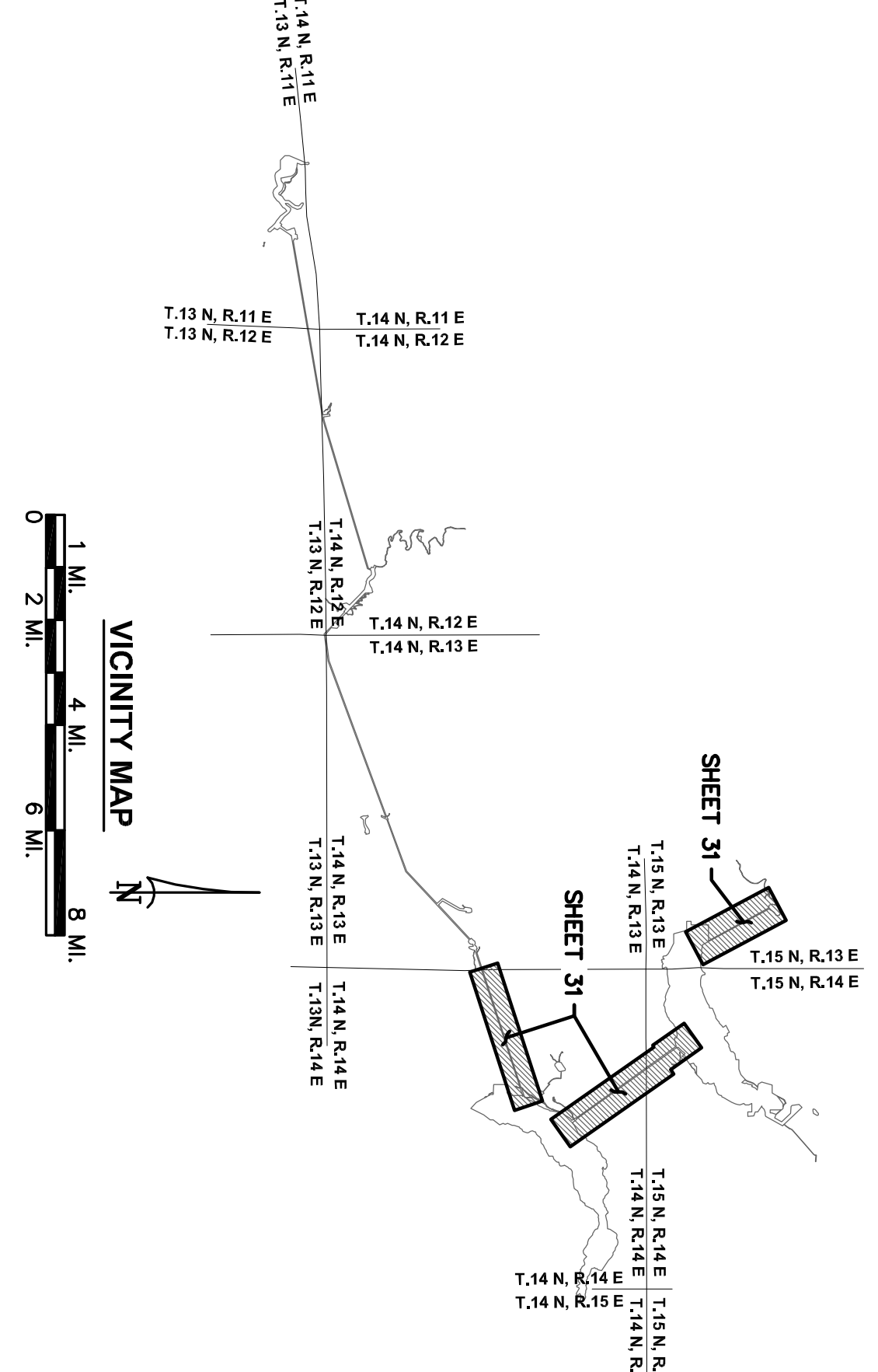


SEE SHEET 11

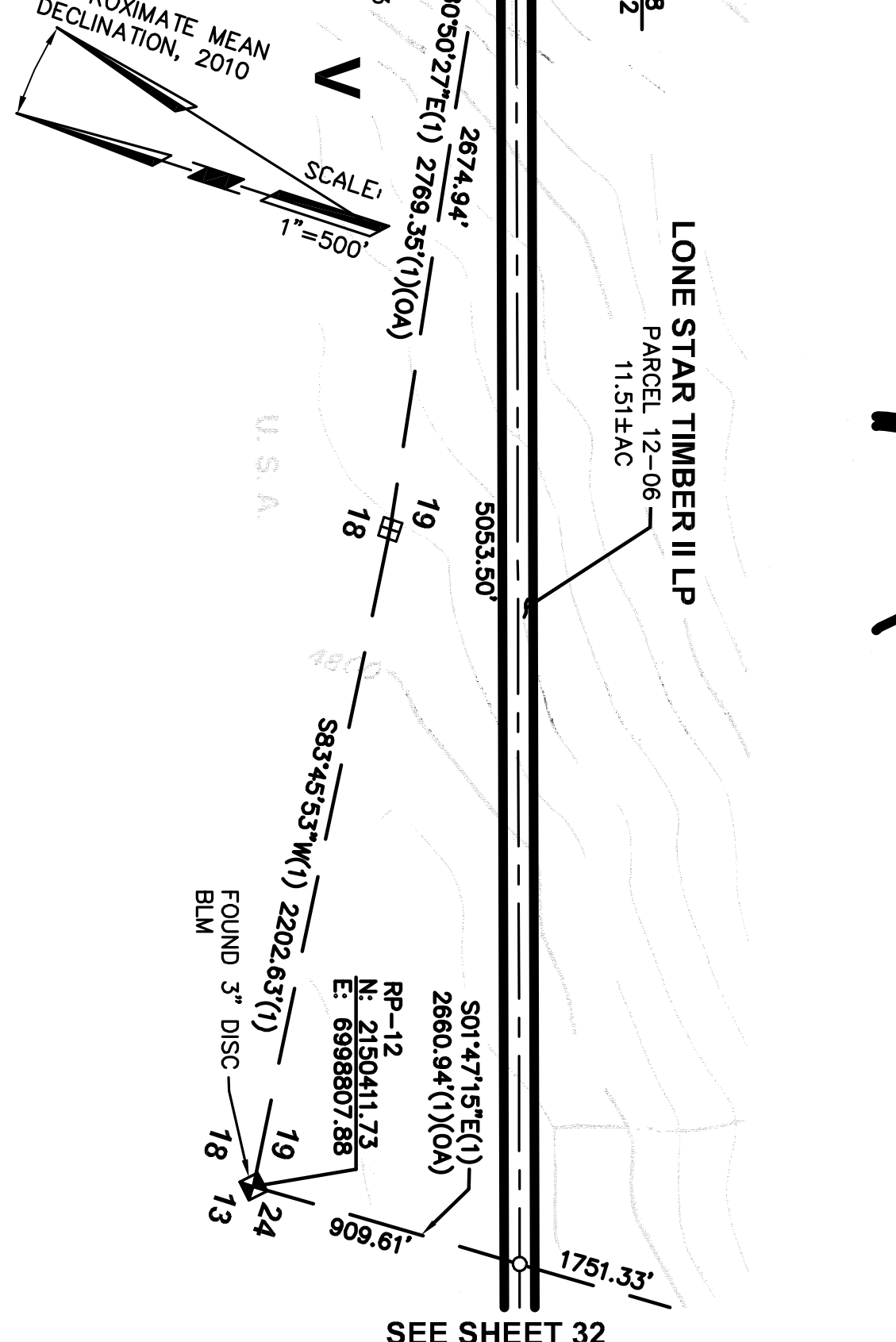
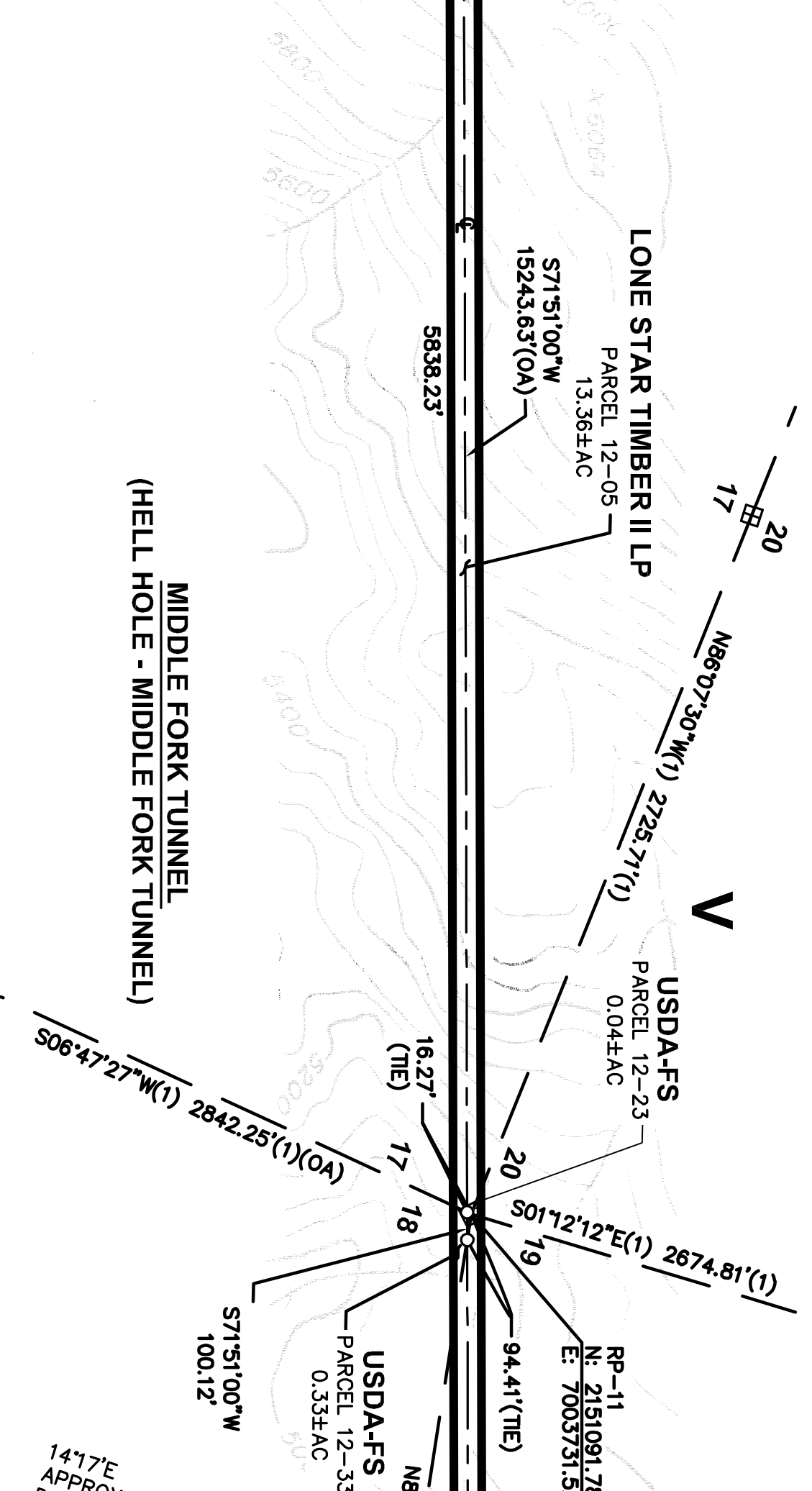
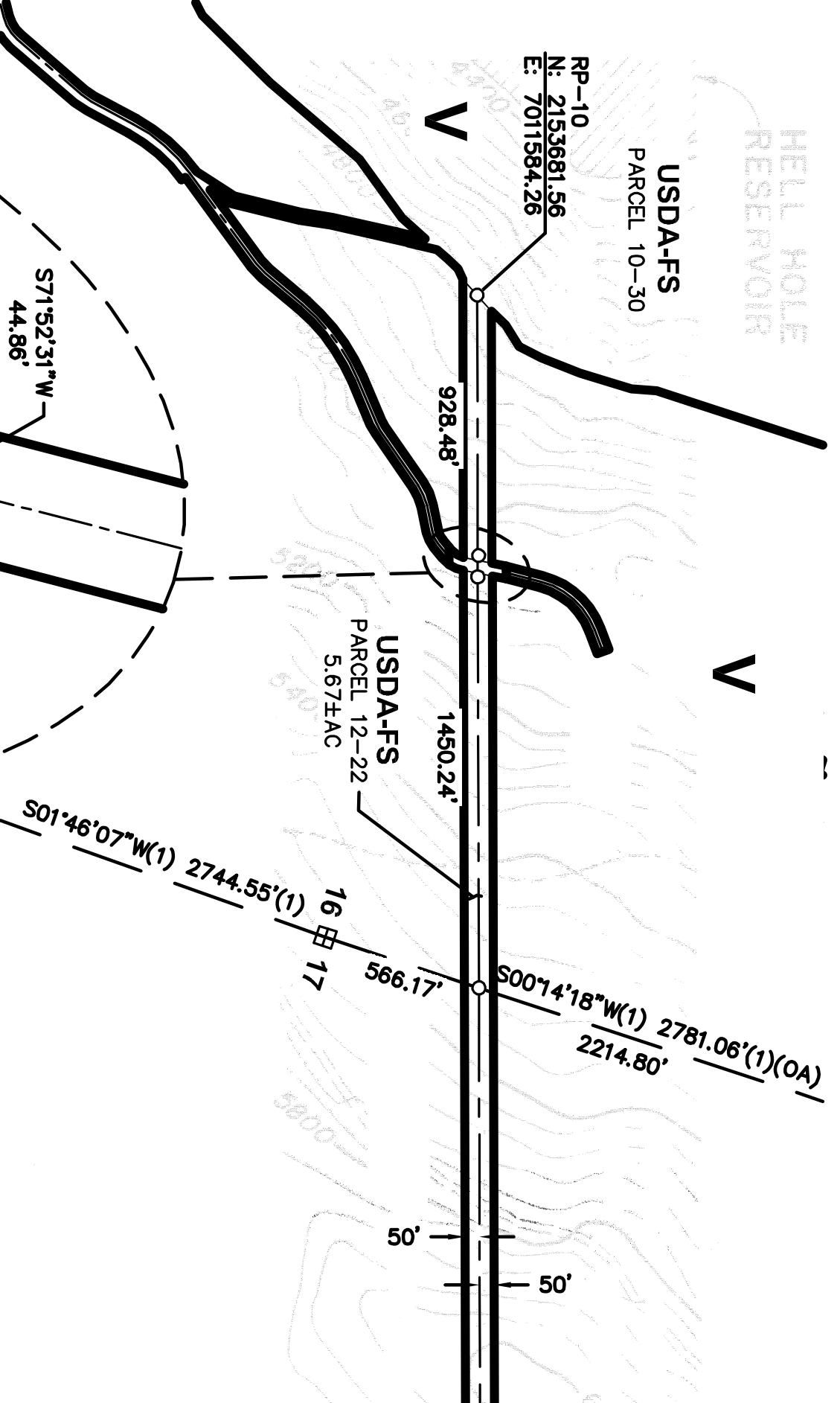
SEE SHEET 8



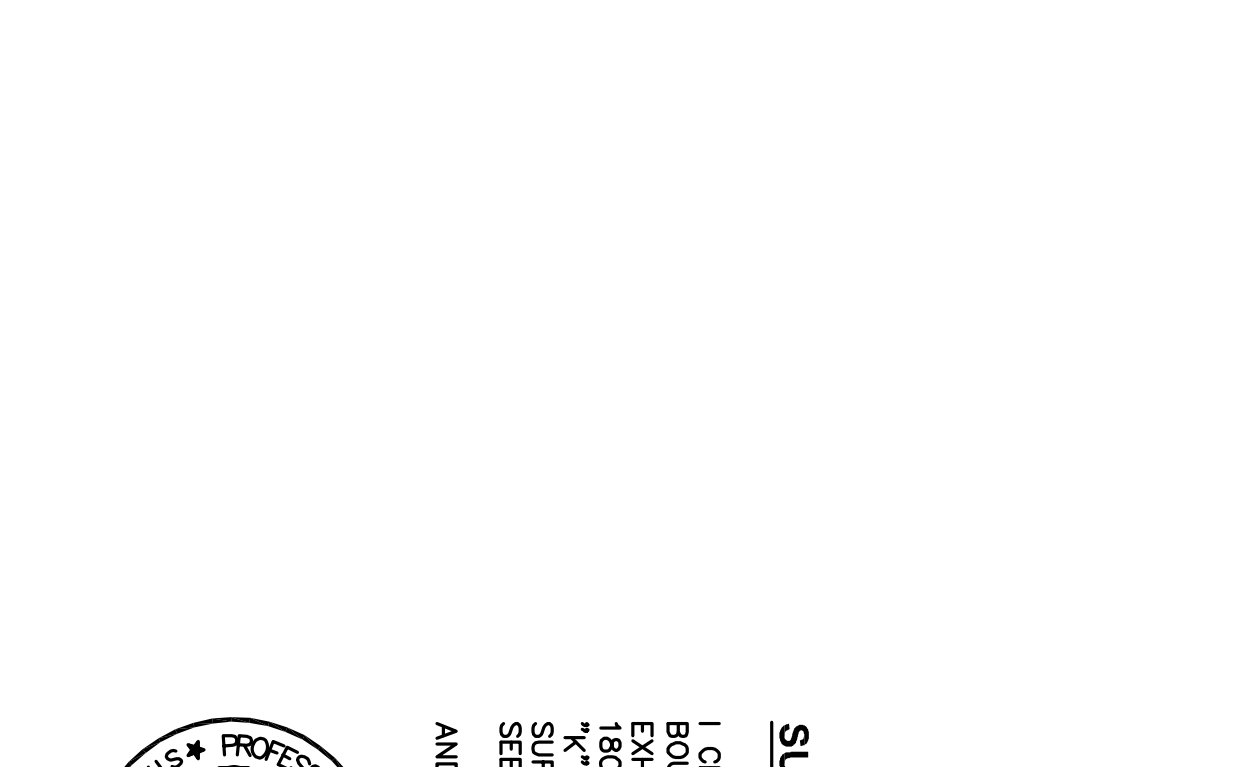
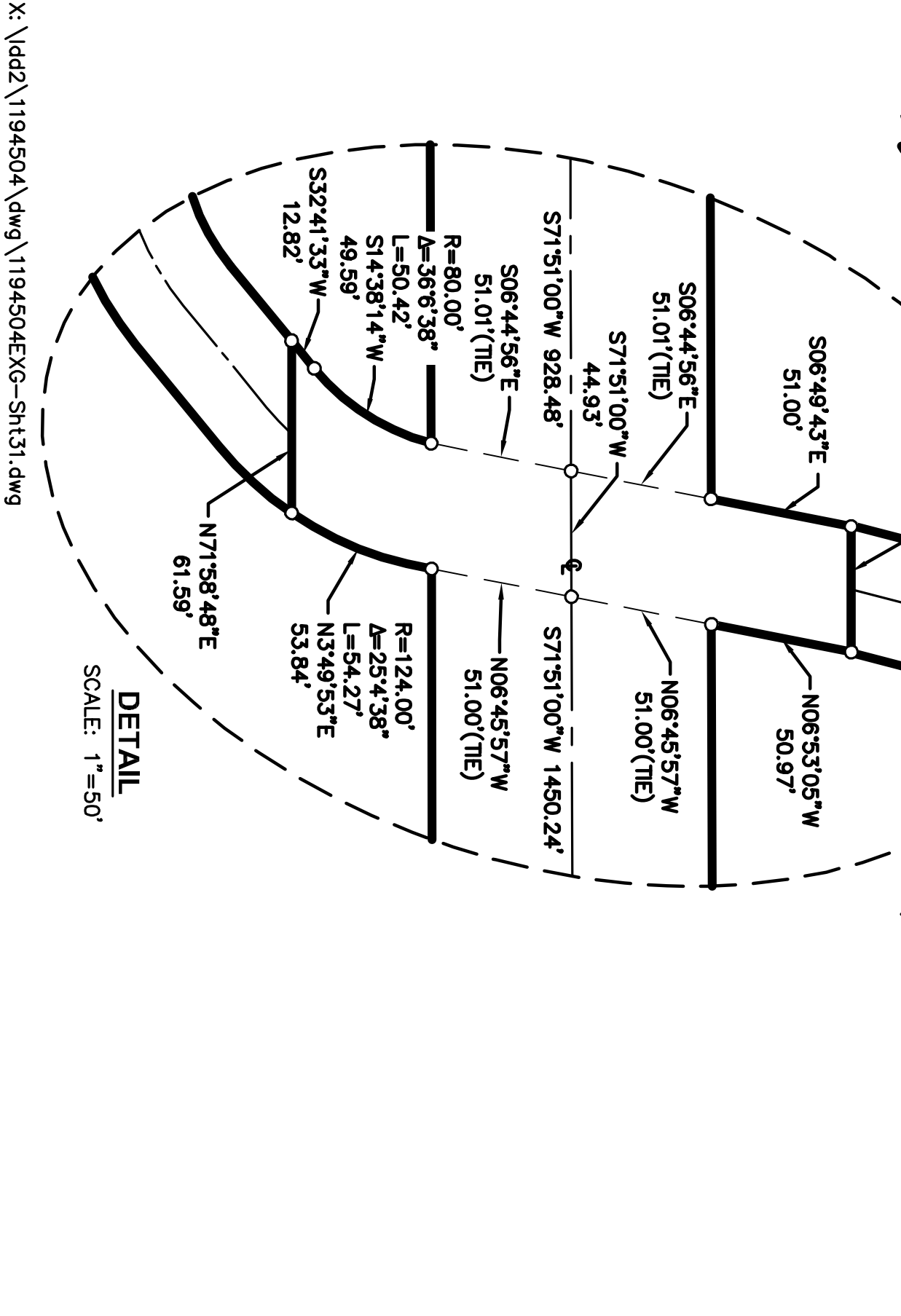
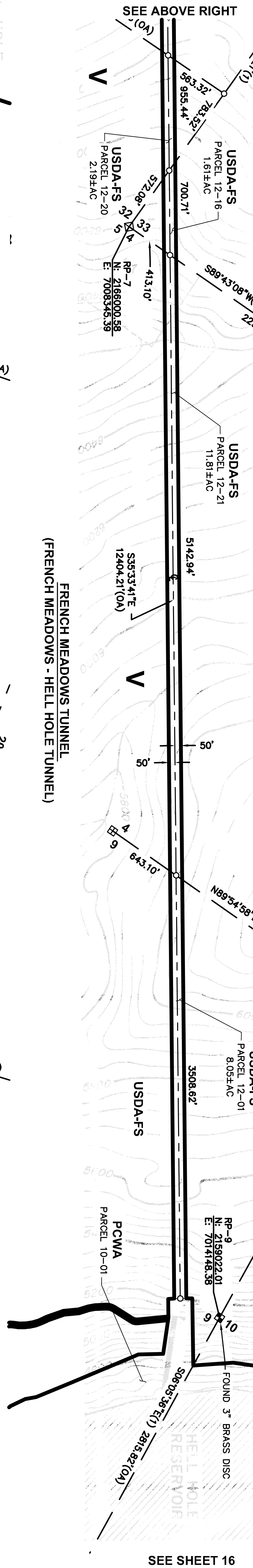
SEE BELOW LEFT



SEE SHEET 18



SEE SHEET 32



**SURVEYOR'S STATEMENT**

I CERTIFY THAT I SUPERVISED THE SURVEY OF THE PROJECT LOTS, THAT THE PROJECT BOUNDARY DELINEATION FOR THE MIDDLE FORK AMERICAN RIVER PROJECT AS SHOWN ON THIS EXHIBIT 'G' IS DEVELOPED WITH REASONABLE ACCURACY AS REQUIRED IN 18CFR4.39 & 18CFR4.41 TO THE GEOGRAPHIC LOCATION. THIS EXHIBIT IS BASED UPON MAPS OF THE EXHIBIT 'K', SHEET 25 OF THE MIDDLE FORK AMERICAN RIVER PROJECT NO.2079 AND BOOK 2 'K' MINERAL RIGHTS OF THE MIDDLE FORK AMERICAN RIVER PROJECT SHOWING THE SECTION CORNER FOR EACH DEMANDS OF THE BOUNDARY DELINEATION AND DATA ACQUISITION. SET CONTROL, SPHERE FOR DETAILS OF THE BOUNDARY DELINEATION AND DATA ACQUISITION.

ANDRECG GEOMATICS

**NOTES**

SHARED TOPOGRAPHY SHOWN HEREON PER EXHIBIT 'K', SHEET 25, MIDDLE FORK AMERICAN RIVER PROJECT TUNNELS PROJECT AREA, REVISED OCT. 20, 1977. ALL FACILITIES AND FEATURES SHOWN HERE ON ARE PER DATA COLLECTED BY OTHERS.

**REFERENCE POINT COORDINATES**

NAD83 CALIFORNIA STATE PLANE COORDINATE SYSTEM ZONE II (CGCS3, ZONE 2); U.S. SURVEY FEET



DENNIS G. MEYER, LS 4751  
 LICENSE EXPIRES: 9/30/11  
 DATE

**LEGEND**

- PROJECT BOUNDARY
- RESERVOIR STORAGE STAGE
- TUNNEL (WITH SHAFT)
- SECTION LINE, ESTABLISHED
- SECTION LINE, PROTRACTED
- SUBDIVISION LINE, GOVERNMENT LAND SURVEY
- ◆ SECTION CORNER, FOUND
- ◆ SECTION CORNER, RECORD
- ◆ 1/4 CORNER, FOUND
- ◆ 1/4 CORNER, RECORD
- COUNTY LINE
- U.S. FOREST BOUNDARY
- PROJECT BOUNDARY CORNER
- (OA) OVERALL DIMENSION
- RP REFERENCE POINT
- V PUBLIC LAND
- ROAD
- BRIDGE
- RIVER OR PERENNIAL STREAM
- INTERMITTENT STREAM
- SPRING
- POND OR LAKE, WATER LEVEL, JULY 1961
- TREES OR BRUSH
- STREAM FLOW GAGING STATION
- WATER SURFACE GAGING STATION
- CAMPGROUND
- BUILDING
- GOVERNMENT BENCH MARK
- BENCH MARK RELOCATION
- PHOTOGRAMMETRIC PRINCIPAL POINT
- PHOTOGRAMMETRIC ELEVATION
- PHOTOGRAMMETRIC ELEVATION
- MINERAL RIGHTS ONLY
- RECORD PER 2 ROS 78

**EXHIBIT 'G' PROJECT 2079**

**MIDDLE FORK AMERICAN RIVER PROJECT TUNNELS PROJECT AREA**

A PORTION OF SECTIONS 24 & 25, T.14S N., R.13E.

A PORTION OF SECTIONS 32 & 33, T.14S N., R.14E.

A PORTION OF SECTIONS 4, 5, 9, 10, 16-20, T.14 N., R.14 E., M.D.M.

PLACER COUNTY, CALIFORNIA

SCALE: 1"=500'

SEPTEMBER 24, 2010

ANDRECG GEOMATICS

125 500 1000

SHEET 31 OF 33